

Proposed STEM Education Center at UCR

Community Project Review Meeting #2

April 21, 2021

Meeting Held via Zoom



Welcome & Thank You

Meeting Agenda

- **Community Project Review
Purpose of Meeting**
- **Project Update - What has
Happened Since the November 2019
Community Meeting?**
- **Overview of the Project Design**
- **Review of Past Questions /
Comments from Previous Meetings**
- **Opportunity For Attendees to
Provide Input on the Project**

Note: This meeting is being recorded.



Participants in Tonight's Meeting

Jeff Kraus

Director of Local Gov't & Community Relations

Gerry Bomotti

Vice Chancellor, Planning, Budget and Admin.

Jacqueline Norman

UCR Campus Architect

Stephanie Tang

UCR Campus Environmental Planner

Jaime Engbrecht

UCR Planner

Julia McLean

UCR Office of the Provost

Renee Hill

RUSD Chief Academic Officer

Sergio San Martin

RUSD Assistant Superintendent

Ana Gonzalez

RUSD Director, Planning and Development

Roger Clarke

Principal, Ruhnau Clarke Architects

Jennifer Dubon

Associate Principal, Ruhnau Clarke Architects



Purpose of This Meeting

Purpose of This Meeting

UCR holds two community meetings to solicit public input on proposed campus projects that are subject to CEQA*. The purpose is to inform the community and receive input on project design.

***CEQA stands for the California Environmental Quality Act, which is a California law that requires the evaluation of a proposed project's impacts upon factors such as transportation, safety, aesthetics, and infrastructure, among others.**



Purpose of This Meeting

- There will be no decisions made or votes taken at tonight's meeting.
- RUSD Board, UCR, and UC Regents actions will occur at a later time.
- A projected timeline will be shown later in the presentation.



A Few More Notes...

- If you would like to sign up to speak, please raise your hand in the Zoom participant window by clicking on the participant icon. When the window opens, click on the raise hand button.
- Phone users – Press 9 to join the queue of speakers.
- Speakers will be called upon in the order that they sign up to speak.



An aerial photograph of the University of California, Riverside campus at dusk. The sky is a deep blue with some clouds. A yellow arrow points to a tall, cylindrical building in the center of the image. The text is overlaid in white, bold font.

What Has Happened Since the November 6, 2019 Meeting?

What Has Happened Since the November 2019 Meeting?

- Non-passage of State Education Bond Measure in March, 2020: A Major Source of STEM Center funds.
- Lengthy Due Diligence on proposed STEM Education Center site.
- COVID–19 Pandemic: Restricted In-Person Meetings for the past 14 months. Gatherings remain prohibited under UC policies.



What Has Happened Since the November 2019 Meeting?

- In order for this project to be eligible for needed state funding, it must be “shovel ready” – i.e. completed construction documents, CEQA analysis, etc.
- On March 18, 2021, the RUSD Board gave direction to staff to move forward with the CEQA analysis on the proposed STEM Education Center planning to get the project in a position to qualify for future state funds.



What Has Happened Since the November 2019 Meeting?

- In March 2021, UCR reconvened its campus STEM Education Center Ad Hoc Advisory Committee comprised of Faculty, Staff, and Students to continue communication with and input from campus stakeholders.



Estimated Timeline

Description	Estimated Timeline
1 UCR Community Meeting No. 2	April 21, 2021
2 CEQA - Environmental Impact Report Prep	May 2021 - Aug 2022
3 UC Regents & RUSD Approvals	Sept 2022 - March 2023
4 Cal Dept. of Education Site Approval	April 2023 - Sept 2023
5 Design & Engineering Development	Oct 2023 - Sept 2025
6 Shovel Ready Status	Oct 2025 - Dec 2025
7 Construction Phase	Jan 2026 - Dec 2027
8 Occupancy	August 2028

PROJECT MILESTONES	2022												2023												2024												2025												2026												2027												2028		
	1	2	3	4	5	6	7	8	9	10	11	12	1	2	3	4	5	6	7	8	9	10	11	12	1	2	3	4	5	6	7	8	9	10	11	12	1	2	3	4	5	6	7	8	9	10	11	12	1	2	3	4	5	6	7	8	9	10	11	12	1	2	3	4	5	6	7	8	9	10	11	12	1	2	
CEQA - EIR Prep.	1	2	3	4	5	6	7	8	9	10	11	12																																																															
UC Regents & RUSD Approvals													1	2	3	4	5	6	7																																																								
Cal Dept. of Ed. Site Approval																				1	2	3	4	5	6																																																		
Design & Engineering Dev.																										1	2	3	4	5	6	7	8	9	10	11	12	13	14	15	16	17	18	19	20	21	22	23	24																										
Shovel Ready Status																																																		1	2	3																							
Construction Phase																																																		1	2	3	4	5	6	7	8	9	10	11	12	13	14	15	16	17	18	19	20	21	22	23	24		
Occupancy																																																																											



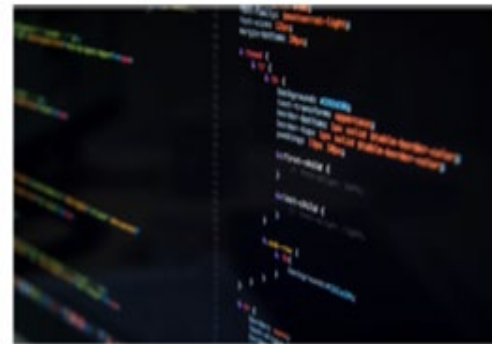
**STEM Education Center
Project Overview**

OVERVIEW

Project Program

Students who attend the STEM Education Center will learn all of the A-G requirements in addition to experiencing the following STEM areas of study:

- **Biomedical & Life Sciences**
- **Environmental & Physical Sciences**
- **Computer Science, Robotics, Coding**
- **Engineering & Advanced Manufacturing**



Funding for this project is planned to come from both RUSD Measure O funds and State funds.



OVERVIEW

Project Purpose

Purpose

- **Promote, foster, and enrich an early college environment**
- **Stimulating a greater student interest in science, technology, engineering, and math (STEM)**
- **Collaborate with a research and science-based institution - UCR**



PROJECT MODEL

**Model Schools
Example
Partnerships of
other schools on
college campuses
in California**

CALIFORNIA SCHOOLS	OPENED	ENROLLMENT	GRADES
International Polytechnic High School at Cal Poly Pomona	1993	550	9-12
California Academy of Mathematics and Science at Cal State Dominguez Hills	1993	680	9-12
The Preuss School at UC San Diego	1999	846	6-12
University High School at Cal State Fresno	2000	520	9-12
Geffen Academy at UCLA	2017	363	6-12

RUSD & UCR

2016 Measure O Ballot Language:

“Partner with U.C. Riverside and Riverside City College to build a Center for the Study of Advanced Science, Technology, Engineering and Math, that will give local high school students access to college-level instruction.”

Proposed Project Site



PLOT MAP

Project Location

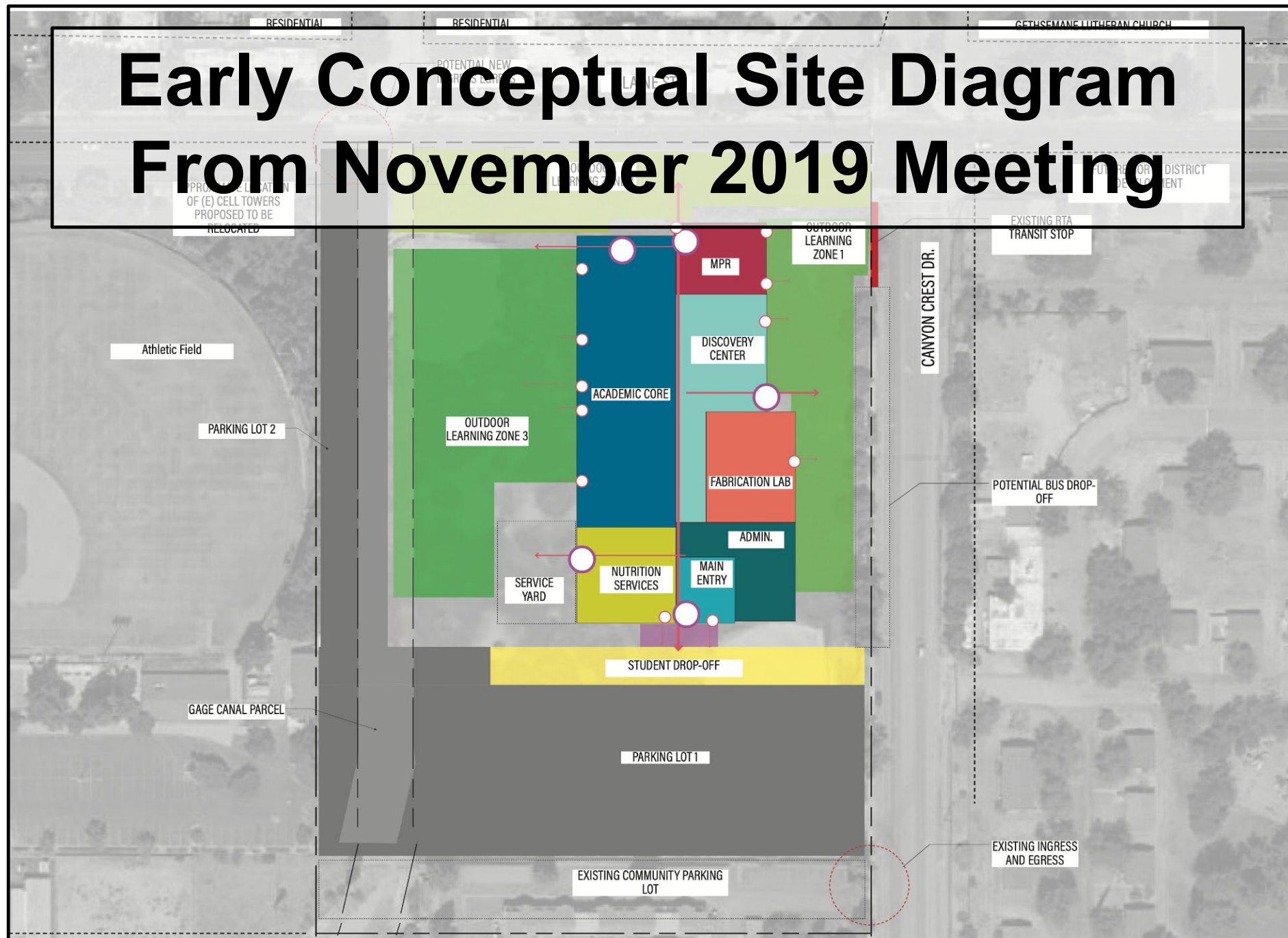


Proposed Project Site

UCR Blaine Site: 4.90 ac
 City Cell Tower: .26 ac
 Usable Space **5.16 ac**

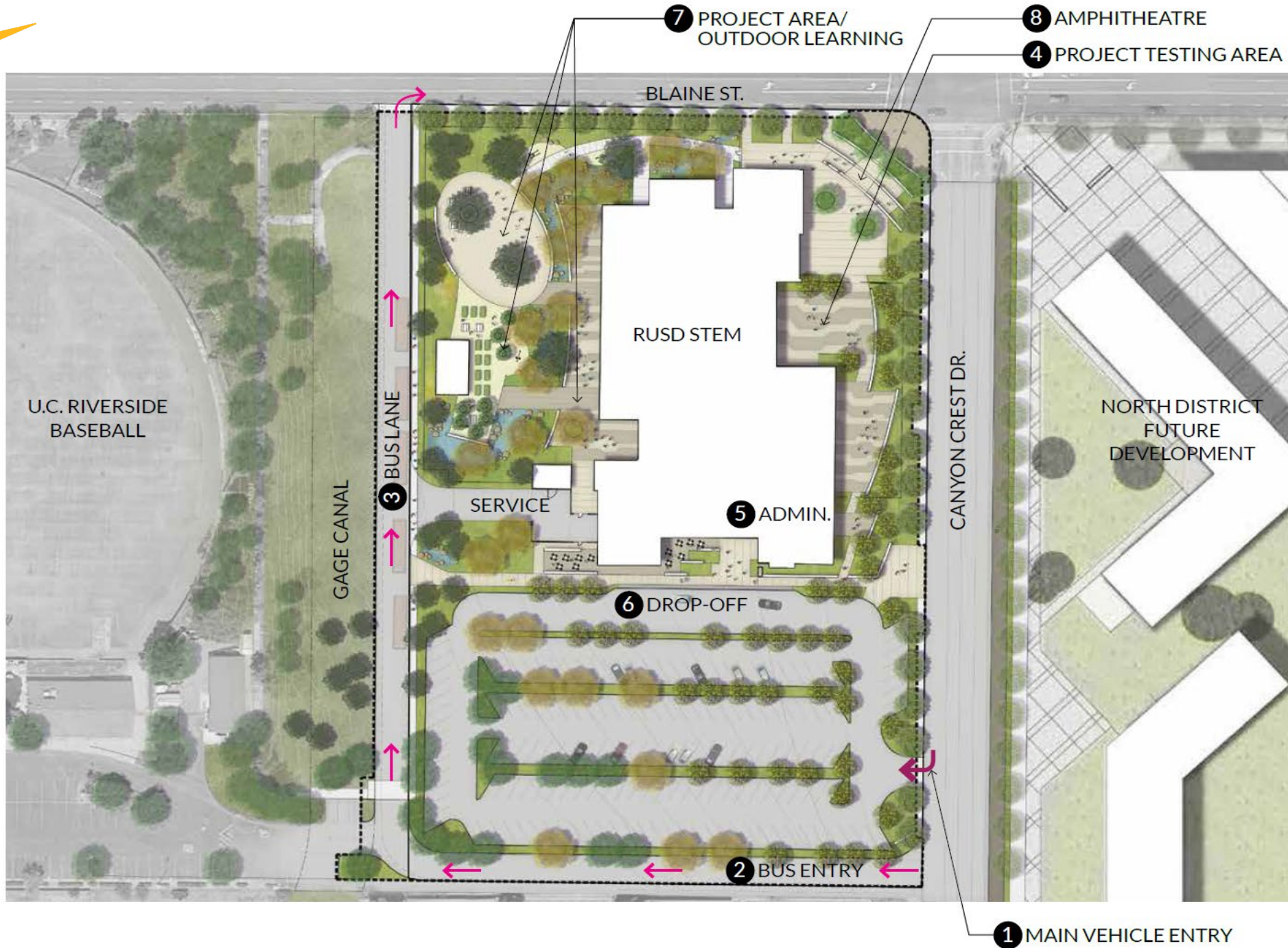
Shared UCR/RUSD
 Easement Road: .77 ac

Early Conceptual Site Diagram From November 2019 Meeting



Project Due Diligence

Description	Status
Soils Testing	Completed
Geologic and Environmental Hazards Assessment Report	Completed
Pipeline Safety Hazard Assessment	Completed
Rail Safety Study	Completed
Boundary Line Survey	Completed
Utility Survey	Completed
State Allocation Board Approval for CTE Funding List	Completed
California Department of Education SFPD 4.0	Completed
UCR CEQA Consultant Selection	Completed
UCR Design Review Board Meeting No. 1	Completed
Department of Toxic Substances (DTSC) Submission	Report Submission to DTSC in process
Sprint Cell Tower (City of Riverside)	Evaluation of proposed location in process
T-Mobile (UCR)	Proposed location selected – Design in process
City of Riverside Parcel Negotiations (Gage Canal & Cell Tower Site)	In process



Current Site Conceptual Plan

Artist Site Rendering





**Previously Received
Comments and Questions,
Including from Meeting #1**

Previous Questions and Comments

Use of UCR Resources

- Concerns about replacement of intramural fields, use of faculty time and labs, impact upon campus eateries, and the ownership/use of the building.

Answers:

- UCR recreational resources used at the proposed site will be replaced elsewhere.
- UCR faculty involvement is voluntary.
- The proposed STEM Education Center is anticipated to follow the same existing policies in place at all other RUSD schools – during school hours, students are not allowed to leave the campus unsupervised – including at lunch time.
- The building will be owned and operated by RUSD under a long term ground lease on property owned by UCR/UC Regents.

Previous Questions and Comments

Student Selection Process

- Will the lottery system be equitable?

Answer:

- Selection process provides equity.
 - All age-appropriate District students will have the opportunity to apply.
 - The selection process will match the process supporting diversity currently used at Riverside STEM Academy.
 - Weighted lottery provides additional opportunity based upon district geography (high school enrollment areas), family educational attainment, and family income.
 - At the March 18, 2021 Board meeting, the RUSD Board directed staff to revisit the lottery to 1) ensure priority is given to RUSD students and 2) to explore additional consideration to family income in lottery.

Previous Questions and Comments

Traffic

- How will the Proposed STEM Education Center Impact Nearby Traffic?

Answer:

- The Environmental Impact Report (EIR), to be prepared over the next 12+ months, will include a Transportation Impact Analysis to look at factors such as site ingress/egress, circulation, and vehicle miles traveled, as well as potential mitigation measures to minimize any impacts. Based upon this analysis, the STEM site layout may be adjusted to improve circulation.
- The EIR will also analyze additional potential impacts including, but not limited to noise, safety, utilities (electricity, sewer, water), aesthetics, air quality, and greenhouse gas emissions.

An aerial photograph of the University of California, Riverside campus during sunset. The sky is filled with orange and yellow clouds, with the sun low on the horizon. In the center, a tall, slender clock tower stands prominently. The surrounding campus features various buildings, parking lots, and green spaces. The overall scene is a mix of natural beauty and urban architecture.

**A full recap of frequently
asked questions and answers
can be found at :
<https://stemedcenter.ucr.edu/>**

An aerial photograph of a university campus at dusk, with a tall, perforated tower in the center. A yellow arrow points to the top of the tower. The text "Your Input about the Site Design of the Project" is overlaid in white.

Your Input about the Site Design of the Project

Community Input Guidelines

01 Request to speak

To request to speak, raise your hand in the “Participants Box.” Phone users – press “9”
Speakers will be called upon in the order they signed up..

02 Wait to be Called Upon

The moderator will announce upcoming speakers in groups of three.

03 Un-Mute Yourself

You will be prompted to un-mute yourself in order to be heard. Phone users, press *6

04 Time Limit

Each Speaker will be limited to two minutes to make their comments. Please keep an eye on the time clock.

05 Be Respectful

You can refute comments from other speakers, but personal attacks will not be tolerated.

06 Additional Comments

Additional comments and feedback can be submitted via email to: ceqa@ucr.edu

Public Input



2:00

To Request to Speak:
Raise your hand in the
“Participants” box.

Phone users – Raise
Hand to speak by
pressing *9

Unmute when prompted.
Phone users press*6 to
unmute.



**We welcome additional
comments and feedback.**

**Send them to:
ceqa@ucr.edu**

We Hear You:

Ongoing Community Engagement and Information

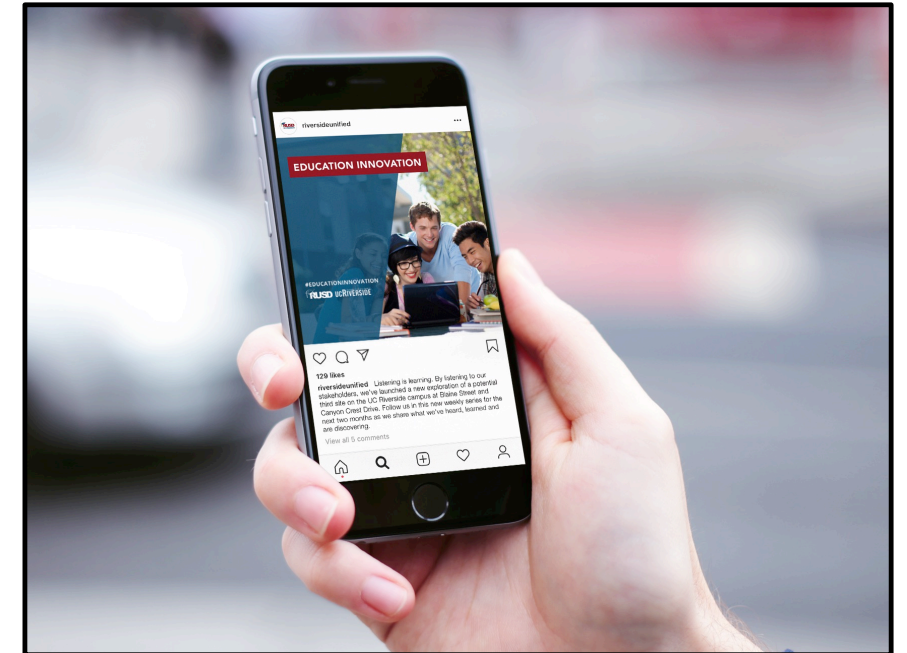
- **Web pages:**

<https://stemedcenter.ucr.edu/>

<http://stemedcenter.riversideunified.org/home>

- **Fact sheets, announcements, e-blast messages and FAQ**

- **Meeting presentations**



An aerial photograph of the University of California, Riverside campus during sunset. The sky is filled with soft, colorful clouds in shades of orange, yellow, and blue. The sun is low on the horizon, casting a warm glow over the scene. In the center, the tall, white Campanile tower stands prominently, its top illuminated. The surrounding campus features various buildings, green spaces, and trees. The overall atmosphere is serene and picturesque.

**Thank You for Participating
in Tonight's Meeting**